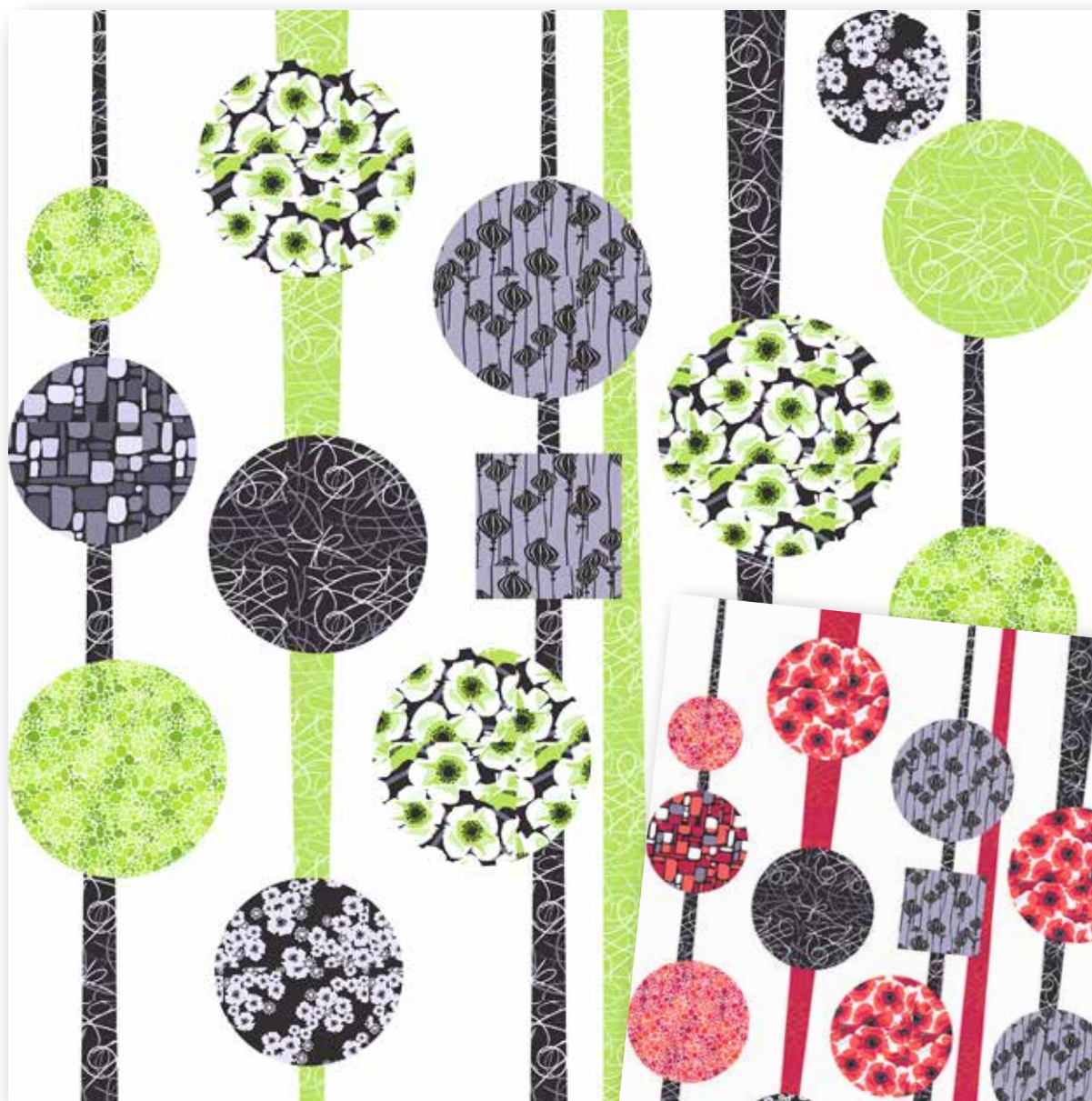




PRESENTS

Poppy Modern



Fabrics by
Jane Dixon

Quilt designed by Jane Dixon
Quilt size: 90" x 90"



makower uk[®]

www.andoverfabrics.com

Poppy Modern Quilt

Introducing Andover Fabrics new collection: Poppy Modern by Jane Dixon

Quilt designed by Jane Dixon

Quilt finishes 90" x 90"

The fabrics are the focus here. Be up-to-the-minute with this contemporary queen/king topper that presents these unusual prints at their very best.

Two colorways give you a chance to make a quilt that is either black and white and red all over or the coolest lime green.

Fabric Requirements

		Yardage	Green	Red
*Fabric A	circles	1¼ yards	6068-G	6068-R
Fabric B	circle	Fat ¼ yard	6069-GC	6069-R
Fabric C	circle, strips	1½ yards	6071-G	6071-GR
Fabric D	circle, strips	2 yards	6071-GK	6071-GK
Fabric E	circles, square	1 yard	6072-RC	6072-RC
Fabric F	circles	1 yard	6074-G	6074-R
Fabric G	circles	½ yard	6075-RK	6075-RK
**Fabric H	background	8 yards	A-S-L	A-S-L
*Backing		8½ yards	6068-G	6068-R
**includes binding				

Cutting Directions

Note: Read assembly directions before cutting patches. All strip and circle appliqué measurements are finished sizes. Add ¼" all around if you are using traditional appliqué. Fabric H panels are cut sizes and include ¼" seam allowances. A fat ¼ is an 18" x 20"-22" cut. Strips and panels are cut a little extra long for insurance.

Fabric A Cut (1) circle with a 20" finished diameter
Cut (3) circles with an 18" finished diameter

Fabric B Cut (1) circle with a 15" finished diameter

Fabric C Cut (3) strips 6" x 31"
Cut (3) strips 4" x 31"
Cut (1) circle with an 18" finished diameter

Fabric D Cut (9) strips 3" x 31" (read step 1 first)
Cut (3) strips 5" x 31"
Cut (1) circle with an 18" finished diameter

Fabric E Cut (2) circles with an 18" finished diameter
Cut (1) square 12" x 12" (finished size)

Fabric F Cut (1) circle with an 18" finished diameter
Cut (1) circle with a 15" finished diameter
Cut (1) circle with an 11" finished diameter

Fabric G Cut (1) circle with a 15" finished diameter
Cut (1) circle with an 11" finished diameter

Fabric H Cut right panel 40" x 91"
Cut center panel 26" x 91"
Cut left panel 26" x 91"
Cut (5) strips 2½" x 76" for binding, cut lengthwise

Backing Cut (3) panels 33" x 98", pieced to fit quilt top with overlap on all sides

Poppy Modern Quilt

Making and Assembling the Quilt

1. Before cutting the strips and circles, decide whether you are going to fuse the patches and finish the raw edges with a satin or blind stitch, or turn under the edges and stitch patches in place. If you plan to turn under edges, you must add turn-under allowances around the patches. In that case, cut Fabric C and D strips 6½", 5½", 4½", and 3½" wide.
2. To draw the circles, use a bar compass or tie a string around a pencil near the lead. Place the pencil in the center of paper that is large enough, and draw a circle around the pencil, holding the string perpendicular. If fusing, draw the 14 circles and 1 square on the wrong side of lightweight fusible web. Fuse to the appropriate fabrics and cut patches on drawn lines. If using traditional appliqué, draw a pattern for the square and each size circle needed, and use them to cut out the fabric patches. Set aside.
3. To make the Fabric C appliqué strip that is 6" on one end and 2" on the other end, join 3 strips 6" x 31" end to end. Press the seams open. Mark a dot at the center at one end of the pieced strip. From the center, mark 1" on either side of the center dot. This is half the width of the narrow measurement. If fusing, press 6"-wide strips of fusible web to the back side of the strip.

Lay out the strip on a long flat surface (a ping pong table is perfect). Using a 10 foot or longer metal measuring tape, align the tape with a corner at one end of the strip. Have a second person on the other end hold the metal tape at the off-center mark. Draw a chalk line or pencil line along the metal ruler. Align the ruler with the other corner and the second off-center mark. Draw a line along the edge of the ruler (Diagram 1). Cut along the drawn lines. Referring to the Quilt Assembly for measurements, repeat these steps on all 6 Fabric C and Fabric D strips.

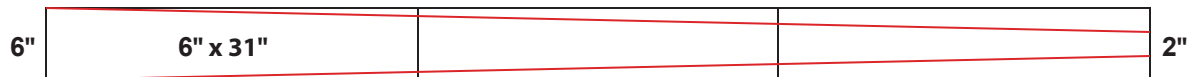
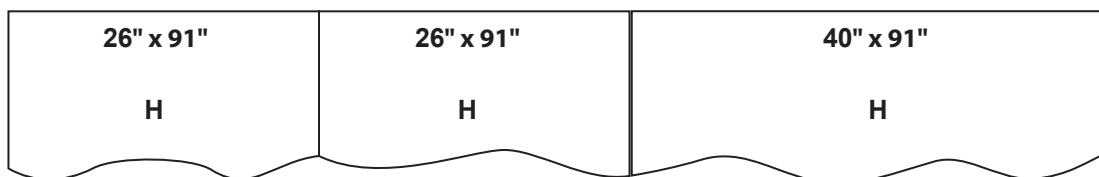


Diagram 1



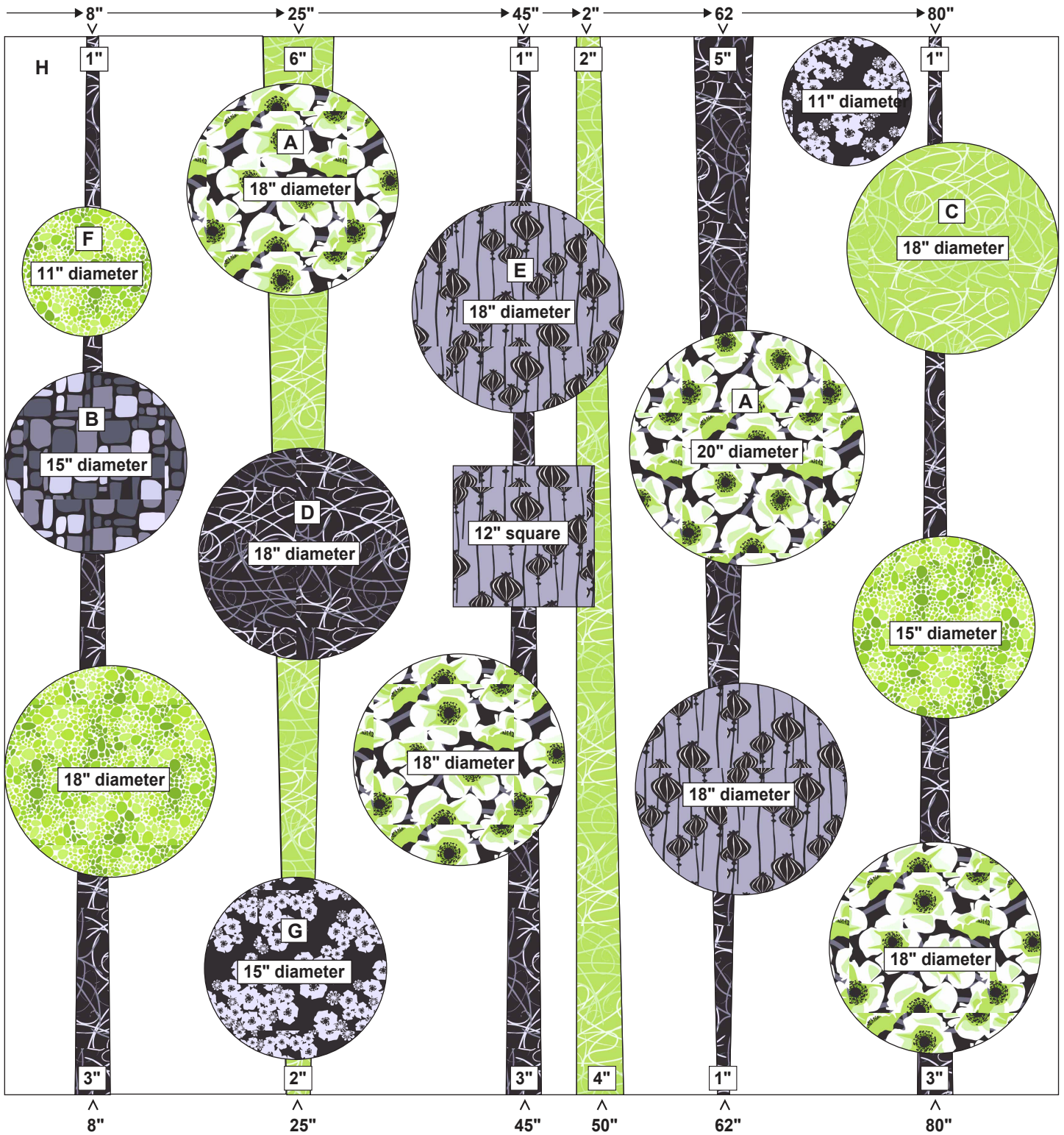
Background Assembly

4. Referring to the Background Assembly Diagram, join 3 Fabric H panels in the order shown. Press seam allowances open.
5. We suggest that you work on a ping pong table or other large surface. Referring to the Quilt Assembly, measure from the top left corner of the background and mark with a pin at each measurement along the top edge. Repeat along the bottom edge. Place the first Fabric D strip so the center of it aligns with the 8" pin at the top. Smooth the strip the length of the background, aligning the center of the strip with the bottom pin. Place a heat-proof cloth under the quilt and fuse the strip in place, shifting the heat cloth as needed, or pin the strip in place. Arrange and fuse or pin all strips to the background, positioning the wider or narrower end of each strip as shown on the diagram. Shift strips as needed to cover the sewn seams of the background. Finish the edges with a machine blind hem stitch or other method.
6. Position and fuse or pin the circles and the square in place. Feel free to shift the circles any way you wish. Keep all circles at least ½" from the raw edge of the quilt. Finish the edges as you did the strips.
7. Trim the top and bottom edges of the quilt evenly and squarely.

Finishing the Quilt

8. Layer the quilt with batting and backing and baste. Quilt in the ditch around the appliqué patches. Quilt around the printed motifs in the circles. Quilt the background with overall loops and circles. Bind to finish the quilt.

Poppy Modern Quilt



Quilt Assembly



makower uk®

1384 Broadway
New York, NY 10018
(800) 223-5678
www.andoverfabrics.com

Poppy Modern

by Jane Dixon

Blend with:
Andover Solid



A-S-L*



6068-R



6069-R



6070-R



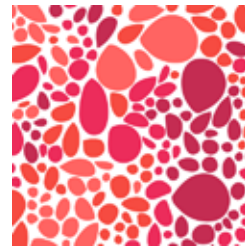
6071-R



6072-R



6073-R



6074-R



6075-RK*



6068-G*



6069-G



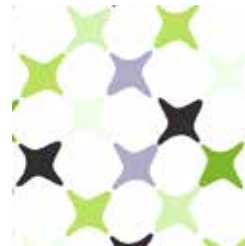
6070-G



6071-G*



6072-G



6073-G



6074-G*



6068-C



6069-GC*



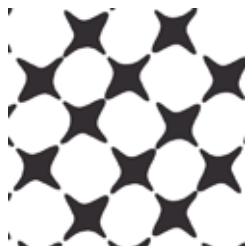
6070-RK



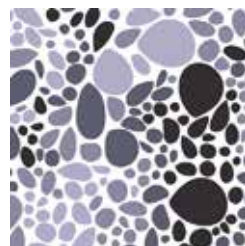
6071-GK*



6072-RC*



6073-RK



6074-GC



6075-GC

*Indicates fabric used in quilt pattern. Fabrics shown are 25% of actual size.